

Pipeline completed!

25 February 2010

The final chapter

In the last few newsletters we highlighted the stages of our pipeline project. The pipeline was necessary to supply more water to the Bergsig farm. An added benefit was to reduce electricity needed to pump the volume of water. The project took a total of six months to complete and the additional water has proven to be immensely beneficial.

Building the additional effluent channel through our Bergsig farm to handle the extra water was a very challenging part of the project. It had to be done around the usual day-to-day farming operations and while returning millions of litres of seawater per hour to the sea. Upon its completion a wooden walkway covering the channel was constructed for safety and accessibility.



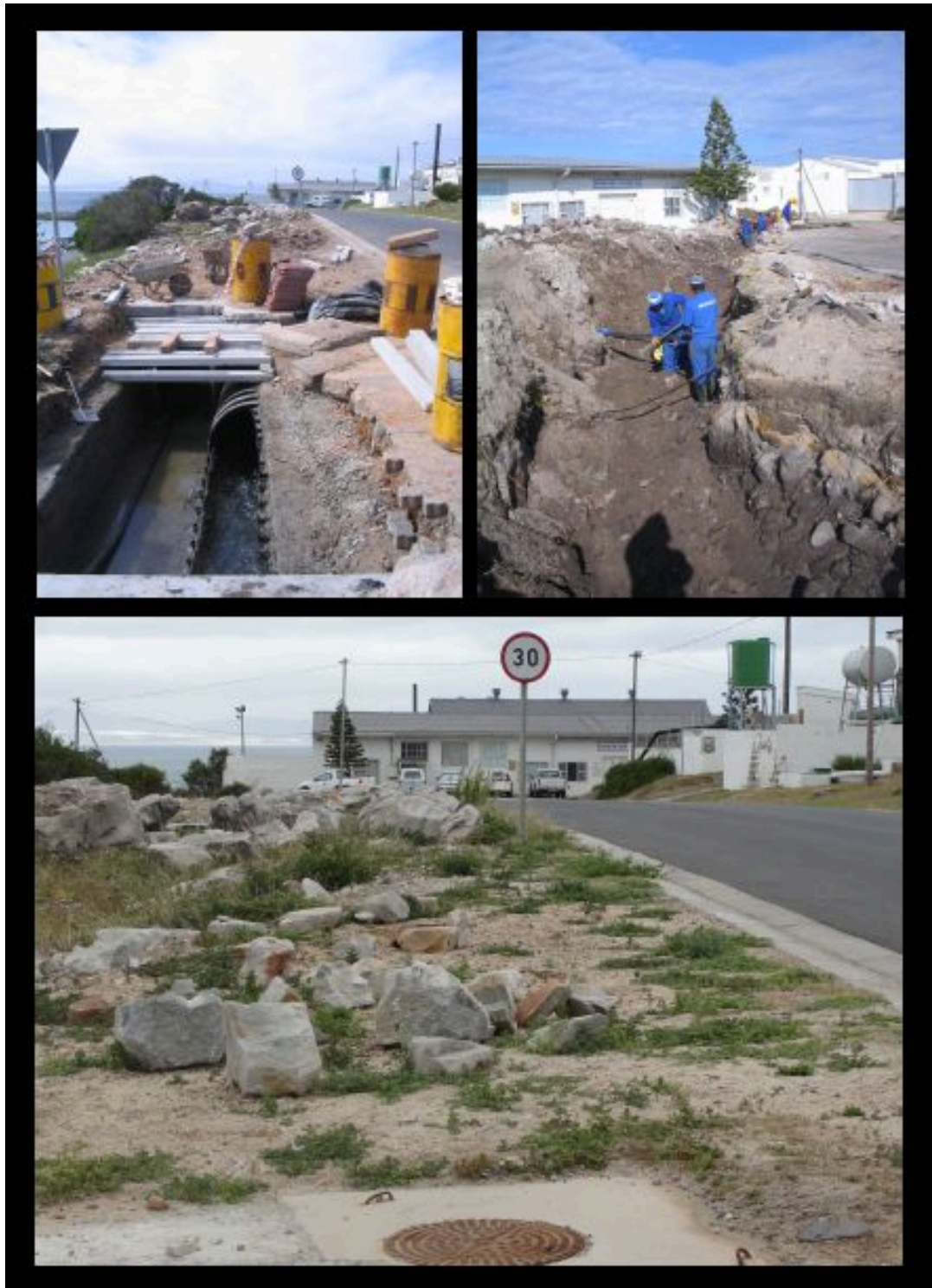
Bergsig channel

To secure the new pipeline across the top of Sea View farm, a support structure had to be built and each section of pipe was lifted onto the rails using a crane. The pipes were moved into position using a custom designed cart, inserted into the next section and then secured to the structure. This pipeline runs corner-to-corner across Sea View farm – a total of 150m in length.



Sea View

In order to increase the effluent pipeline capacity from our Bergsig farm, a 200m long channel of 1.5m wide and 1.5 m deep had to be dug and in certain areas blasted through bedrock through the New Harbour. Additional pipes were installed to provide for the increased quantity of water passing through. Rehabilitation of areas where the work was done was of utmost importance to all involved. After the installation of the pipes, the area was cleaned and levelled, paving was repaired and vegetation re-established.



Bergsig effluent in New Harbour, Hermanus